

Anti-SPRN antibody

Cat. No.	ml260731
Package	25 µl/100 µl/200 µl
Storage	-20°C, pH7.4 PBS, 0.05% NaN ₃ , 40% Glycerol

Product overview

Description	Anti-SPRN rabbit polyclonal antibody
Applications	ELISA, IHC
Immunogen	Synthetic peptide of human SPRN
Reactivity	Human
Content	0.2 mg/ml
Host species	Rabbit
Ig class	Immunogen-specific rabbit IgG
Purification	Antigen affinity purification

Target information

Symbol	SPRN
Full name	shadow of prion protein homolog (zebrafish)
Synonyms	SHO; SHADOO; bA108K14.1
Swissprot	Q5BIV9

Target Background

SPRN (shadow of prion protein), also known as SHO or SHADOO, is a 151 amino acid cytoplasmic protein that is mainly expressed in brain. SPRN is considered a prion-like protein that has PrP(C)-like neuroprotective activity and may act as a modulator for the biological actions of normal and abnormal PrP. In humans, mutations in the gene encoding SPRN may be associated with variant and sporadic Creutzfeldt-Jakob disease, a degenerative neurological disorder that is incurable and invariably fatal.

订购热线: 4008-898-798

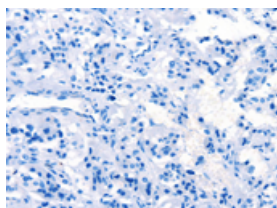
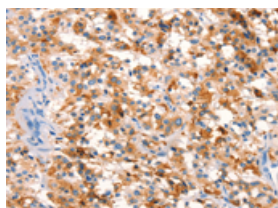
Applications

Immunohistochemistry

Predicted cell location: Cytoplasm

Positive control: Human thyroid cancer

Recommended dilution: 25-100

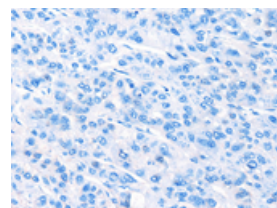
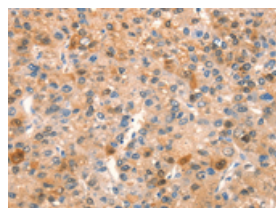


The image on the left is immunohistochemistry of paraffin-embedded Human thyroid cancer tissue using ml260731 (SPRN Antibody) at dilution 1/15, on the right is treated with synthetic peptide. (Original magnification: $\times 200$)

Predicted cell location: Cytoplasm

Positive control: Human liver cancer

Recommended dilution: 25-100



The image on the left is immunohistochemistry of paraffin-embedded Human liver cancer tissue using ml260731 (SPRN Antibody) at dilution 1/15, on the right is treated with synthetic peptide. (Original magnification: $\times 200$)

ELISA

Recommended dilution: 1000-2000

联系电话: 4008-898-798, 021-61725725

联系QQ: 2881505695, 2881505696

邮箱: mlbio_cn@yeah.net

网址: www.mlbio.cn