

Anti-DDX43 antibody

Cat. No.	ml122223
Package	25 µl/100 µl/200 µl
Storage	-20°C, pH7.4 PBS, 0.05% NaN ₃ , 40% Glycerol

Product overview

Description	Anti-DDX43 rabbit polyclonal antibody
Applications	ELISA, WB, IHC
Immunogen	Fusion protein of human DDX43
Reactivity	Human
Content	0.5 mg/ml
Host species	Rabbit
Ig class	Immunogen-specific rabbit IgG
Purification	Antigen affinity purification

Target information

Symbol	DDX43
Full name	DEAD (Asp-Glu-Ala-Asp) box polypeptide 43
Synonyms	CT13; HAGE
Swissprot	Q9NXZ2

Target Background

DEAD-box proteins, characterized by the conserved motif Asp-Glu-Ala-Asp, are putative RNA helicases implicated in several cellular processes involving modifications of RNA secondary structure and ribosome/spliceosome assembly. Based on their distribution patterns, some members of this family may be involved in embryogenesis, spermatogenesis and cellular growth and division. DDX43 (DEAD (Asp-Glu-Ala-Asp) box polypeptide 43), also known as CT13 or HAGE, is a 648 amino acid protein that contains one KH domain, one helicase C-terminal domain and one helicase ATP-binding domain and belongs to the DEAD-box family. Expressed in testis and present at abnormally high levels in a variety of tumors, DDX43 is thought to function as an ATP-dependent RNA helicase that may play a role tumor transformation and metastasis.

订购热线: 4008-898-798

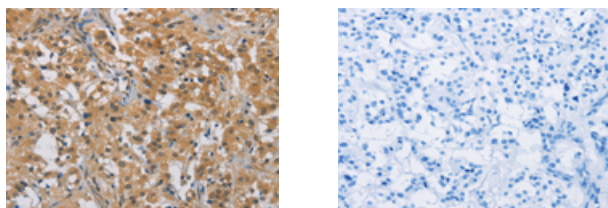
Applications

Immunohistochemistry

Predicted cell location: Cytoplasm or Nucleus

Positive control: Human thyroid cancer

Recommended dilution: 50-200



The image on the left is immunohistochemistry of paraffin-embedded Human thyroid cancer tissue using ml122223(DDX43 Antibody) at dilution 1/50, on the right is treated with fusion protein. (Original magnification: $\times 200$)

Western blotting

Predicted band size: 73 kDa

Positive control: HepG2 cells

Recommended dilution: 200-1000

Gel: 8%SDS-PAGE

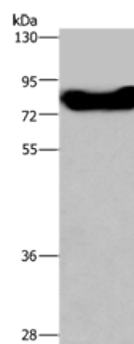
Lysate: 40 μ g

Lane: HepG2 cells

Primary antibody: ml122223(DDX43 Antibody) at dilution 1/200

Secondary antibody: Goat anti rabbit IgG at 1/8000 dilution

Exposure time: 1 minute



ELISA

Recommended dilution: 2000-5000

联系电话: 4008-898-798, 021-61725725

联系QQ: 2881505695, 2881505696

邮箱: mlbio_cn@yeah.net

网址: www.mlbio.cn