

Anti-ANGPT4 antibody

Cat. No.	ml261279
Package	25 µl/100 µl/200 µl
Storage	-20°C, pH7.4 PBS, 0.05% NaN ₃ , 40% Glycerol

Product overview

Description	Anti-ANGPT4 rabbit polyclonal antibody
Applications	ELISA, WB, IHC
Immunogen	Synthetic peptide of human ANGPT4
Reactivity	Human
Content	0.426 mg/ml
Host species	Rabbit
Ig class	Immunogen-specific rabbit IgG
Purification	Antigen affinity purification

Target information

Symbol	ANGPT4
Full name	angiotensinogen 4

Synonyms AGP4; ANG4; ANG-3

Swissprot Q9Y264

Target Background

Angiopoietins are proteins with important roles in vascular development and angiogenesis. All angiopoietins bind with similar affinity to an endothelial cell-specific tyrosine-protein kinase receptor. The mechanism by which they contribute to angiogenesis is thought to involve regulation of endothelial cell interactions with supporting perivascular cells. The protein encoded by this gene functions as an agonist and is an angiopoietin.

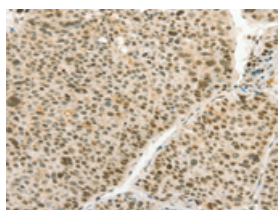
Applications

Immunohistochemistry

Predicted cell location: Nucleus

Positive control: Human liver cancer

Recommended dilution: 100-300

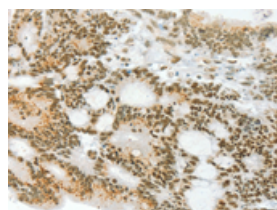


The image on the left is immunohistochemistry of paraffin-embedded Human liver cancer tissue using ml261279(ANGPT4 Antibody) at dilution 1/70, on the right is treated with synthetic peptide. (Original magnification: $\times 200$)

Predicted cell location: Nucleus

Positive control: Human colon cancer

Recommended dilution: 100-300



The image on the left is immunohistochemistry of paraffin-embedded Human colon cancer tissue using ml261279(ANGPT4 Antibody) at dilution 1/70, on the right is treated with synthetic peptide. (Original magnification: $\times 200$)

Western blotting

Predicted band size: 57 kDa

Positive control: Human right lung and left lung cancer tissue

Recommended dilution: 200-1000

Gel: 8%SDS-PAGE

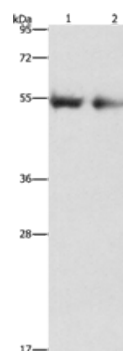
Lysate: 40 μ g

Lane 1-2: Human right lung tissue, Human left lung cancer tissue

Primary antibody: ml261279(ANGPT4 Antibody) at dilution 1/480

Secondary antibody: Goat anti rabbit IgG at 1/8000 dilution

Exposure time: 2 minutes



ELISA

Recommended dilution: 2000-10000

联系电话: 4008-898-798, 021-61725725

联系QQ: 2881505695, 2881505696

邮箱: mlbio_cn@yeah.net

网址: www.mlbio.cn